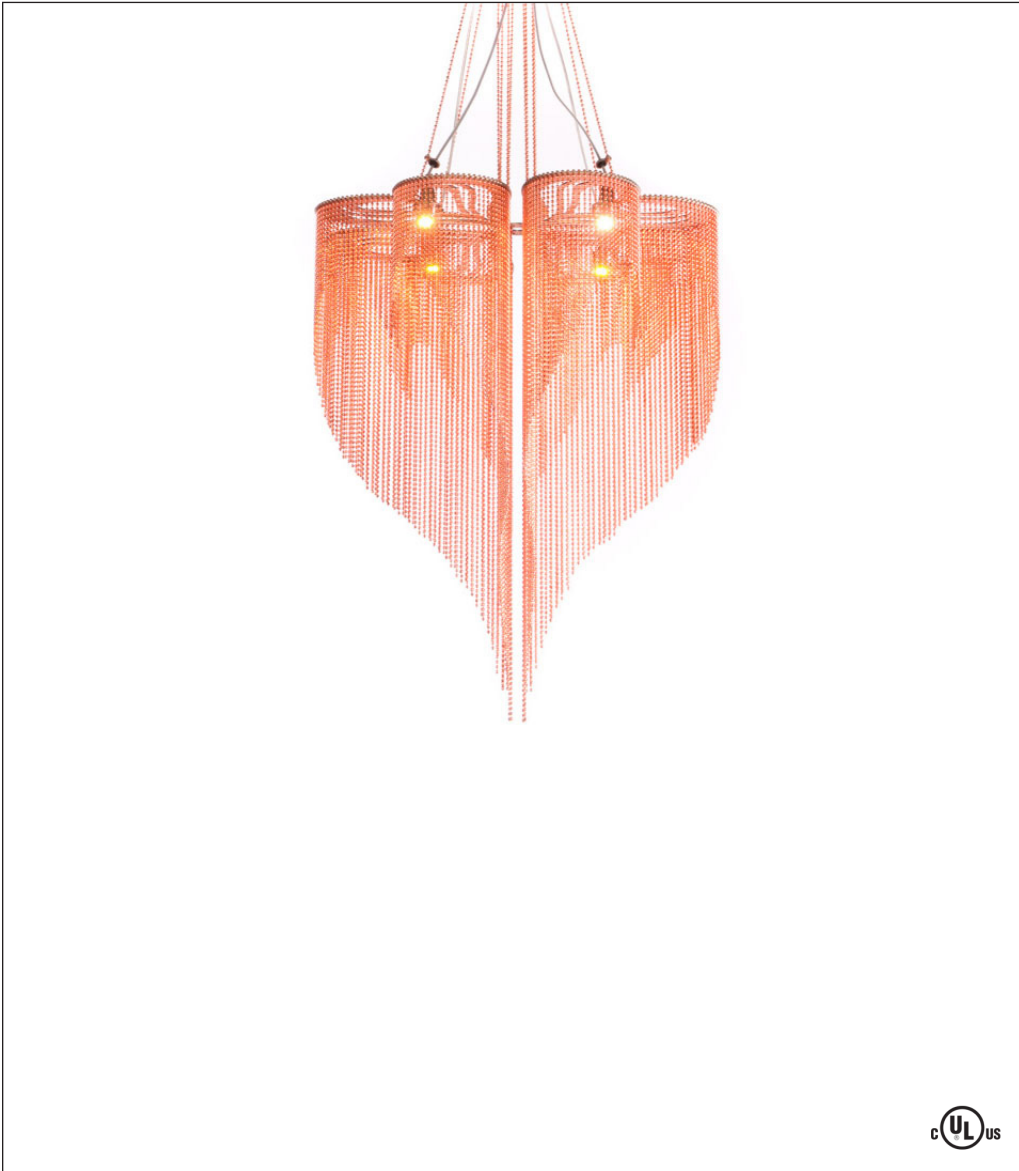
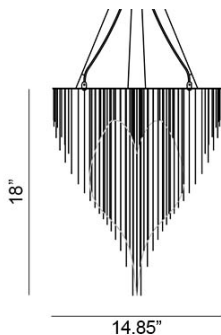


# Willowlamp

## Secret Love Clover 400 Pendant



Design by: Adam Hoets



The Secret Love Clover Pendant 400, in the Love Clovers Collection by South African-based manufacturer Willowlamp, was designed by Adam Hoets. Made of metal beads dangling from flat metal bands that dictate the fixture's shape, the graduating fluidity of this pendant makes it a lucky charm for any space. The fixture is available strung with silver, smoke, copper, brass, rust, white, red, and black beads. Custom colors available upon request.

### Ordering Matrix

#### Model

C-SECRETLOVE-400-S-M-SIL = Silver  
C-SECRETLOVE-400-S-M-SMK = Smoke  
C-SECRETLOVE-400-S-M-COP = Copper  
C-SECRETLOVE-400-S-M-BRA = Brass  
C-SECRETLOVE-400-S-M-RUS = Rust  
C-SECRETLOVE-400-S-C-WHT = White  
C-SECRETLOVE-400-S-C-BLK = Black  
C-SECRETLOVE-400-S-C-RED = Red

Standard cord length: 3 Feet. Custom cord lengths available upon request. Please specify when ordering.

#### LED

4 x 3W G9 / 2700K / 270 Lumens

#### Finish

SIL = Silver	SMK = Smoke
COP = Copper	BRA = Brass
RUS = Rust	WHT = White
BLK = Black	RED = Red

#### Fixture as shown

C-SECRETLOVE-400-S-M

Secret Love Clover Pendant 400

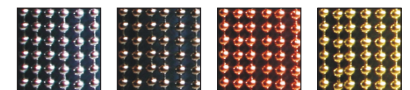
#### LED

4 x 3W

#### COP

Copper

#### Finish



Silver

Smoke

Copper

Brass



Rust



White



Black



Red

Global  
Lighting

hello@globalighting.com | www.globalighting.com